



E & A CONSULTING GROUP, INC.

Engineering Answers

10909 Mill Valley Rd, Ste 100 | Omaha, NE 68154
402.895.4700
eacg.com

Dear Homeowner,

The SID has contracted concrete work to be done on the streets in your SID. A contractor will be on site to do work which includes removing the existing concrete that is damaged and replacing it with new pavement.

Throughout the course of this project, there could be some minimal damage done to yards and or sprinkler systems. The contractor that is on site will be responsible for replacing any damaged sprinkler lines and/or heads. They will also be responsible for any yard damage. Once the new seed and mat and/or sod is installed, it will be the responsibility of the homeowner at each lot to water the new seed and mat and/or sod until it has re-established itself.

Before starting the work on site, each contractor must put in a call and have all the utilities in the area located. You might notice some areas in your yard that have been flagged and/or spray painted. This does not indicate the area in which they will be working. It is just to give them an idea of what kind of utilities are in the area that could possibly be hit while the contractor is on site working.

All work that is completed in public Right-of-Way and follow City of Omaha and Sarpy County specifications.

The work in your SID should not take longer than 30 days to complete. Please let me know if you have any questions or concerns on this at all.

Thank You,

A handwritten signature in black ink, appearing to read 'Nelson Flores', is written over a white background.

Nelson Flores

Construction Admin Tech

Engineering Answers...by transforming concepts into reality

E & A Consulting Group, Inc.

10909 Mill Valley Road, Suite 100 • Omaha, NE 68154

402.895.4700 (o) • 402.506.5023 (m)

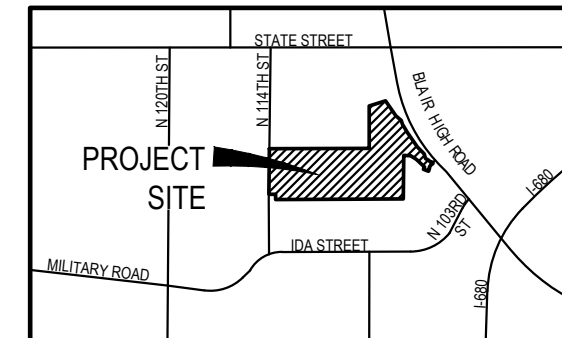
nflores@eacg.com



AVALON NORTH - DEERWOOD

2024 STREET RECONSTRUCTION

SID NO. 490
DOUGLAS COUNTY, NEBRASKA



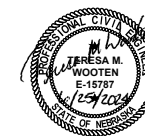
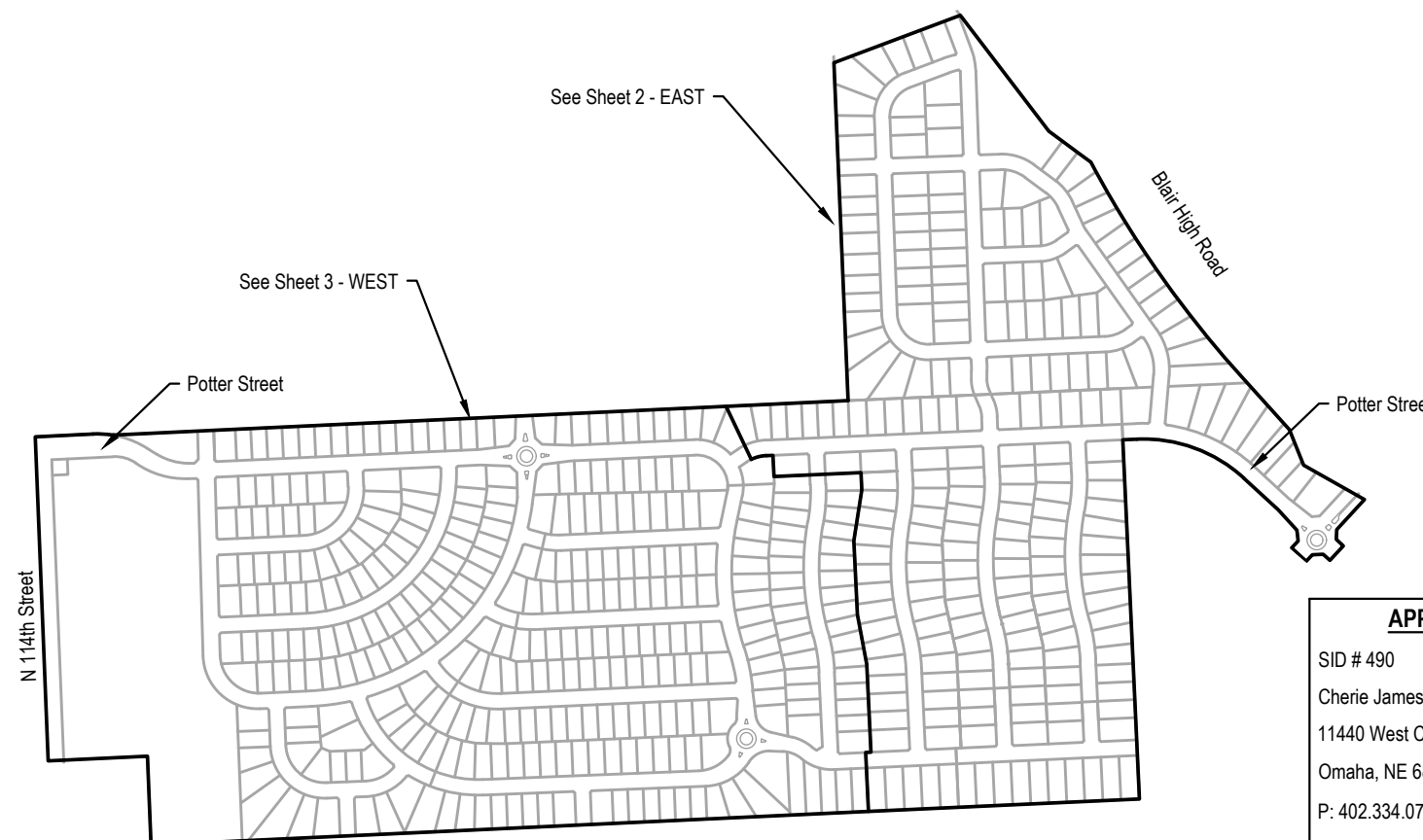
VICINITY MAP

INDEX OF SHEETS

SHEET NO.	DESCRIPTION
1	COVER
2	EAST
3	WEST
4	TOTAL QUANTITIES
5	COMPOSITE MAP

APPROXIMATE BID QUANTITIES

ITEM	DESCRIPTION	QUANTITY	UNIT
1	CONCRETE PAVEMENT REPAIR, LARGE AREA	625	SY
2	CONCRETE PAVEMENT REPAIR, SMALL AREA	503	SY
3	FULL DEPTH SAW CUT EXISTING PAVEMENT	1,432	LF
4	ADJUST WATER VALVE TO GRADE	1	EA
5	ADJUST MANHOLE TO GRADE	2	EA
6	REMOVE AND REPLACE PCC SIDEWALK	32	SF
7	REMOVE AND REPLACE IMPRINTED PCC SURFACE (@ ROUNDABOUT)	1,815	SF
8	REMOVE PCC SIDEWALK	130	SF
9	REMOVE PCC CURB RAMP	72	SF
10	CONSTRUCT PCC SIDEWALK	64	SF
11	CONSTRUCT PCC CURB RAMP	100	SF
12	CONSTRUCT IMPRINTED PCC SURFACE	44	SF
13	REPAIR DRIVEWAY	40	SF
14	CONSTRUCT DETECTABLE WARNING PANEL (2 locations)	16	SF
15	REMOVE AND REPLACE FAULTY SUBGRADE	25	TN
16	ADJUST SPRINKLER (AS NEEDED)	2	EA
17	REPLACE CURB INLET TOP WITH ARMOR FACE	4	EA



NOTE TO BIDDERS

- All project procedures, materials, bonds and reserves shall conform to the City of Omaha's Standard Specifications for Public Works Construction, 2024 Edition ("Standard Specifications"). It is the responsibility of the CONTRACTOR to be familiar with the contents of the Standard Specifications. The Standard Specifications can be found at: <https://publicworks.cityofomaha.org/contractors-consultants2/contractors/standard-plates-curb-ramps-and-specifications>
- References to "Standard Plates" refers to the City of Omaha's 2024 Standard Plate list. These Standard Plates can be found at: <https://publicworks.cityofomaha.org/2024-standard-plate>

The CONTRACTOR is referred to the following Standard Plates for use on this project:

PLATE NO.	DESCRIPTION	REVISION DATE
504-01-1 & 2	Concrete Curb Ramp	02/13/2024
702-10	Reinforced Concrete Curb Inlet Cover with Face Armor	02/13/2024
1002-02-1, 3, 4	Pavement Repair	02/13/2024

APPLICANT

SID # 490
Cherie James, Chairman
11440 West Center Road, Ste. C
Omaha, NE 68144
P: 402.334.0700
F: 402.334.0815
jhfd@fdjlw.com

DESIGNER

E & A Consulting Group, Inc
Teresa Wooten, P.E.
10909 Mill Valley Road, Suite 100
Omaha, NE 68154
P: 402.895.4700
F: 402.895.3599
twooten@eacg.com

INSPECTOR

E & A Consulting Group, Inc
Randall L. Pierce, P.E.
10909 Mill Valley Road, Suite 100
Omaha, NE 68154
P: 402.895.4700
F: 402.895.3599
rpierce@eacg.com

CONTRACTOR

E & A CONSULTING GROUP, INC.
Engineering • Planning • Environmental & Field Services
10909 Mill Valley Road, Suite 100 • Omaha, NE 68154
Phone: 402.895.4700 • Fax: 402.895.3599
www.eacg.com
State of NE Certificate of Authorization #CA0008

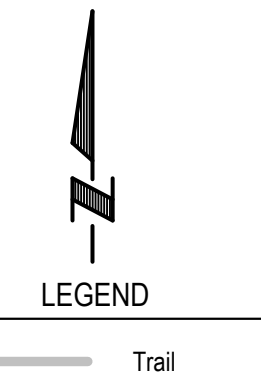
AVALON NORTH - DEERWOOD
2024 STREET
RECONSTRUCTION
SID 490
DOUGLAS COUNTY, NEBRASKA

COVER

6/25/2024 12:07 PM K:\Projects\2003\2024\p30\Engineering\CAD Files\Paving\Avalon North - Deerwood 2024 Street Reconstruction-000.dwg

Prog No: P2003-2024-090
Date: 6/25/2024
Designed By: TAMI
Drawn By: JMB
Scale: 1" = 60'
Sheet: 1 of 5

Jessica Brown

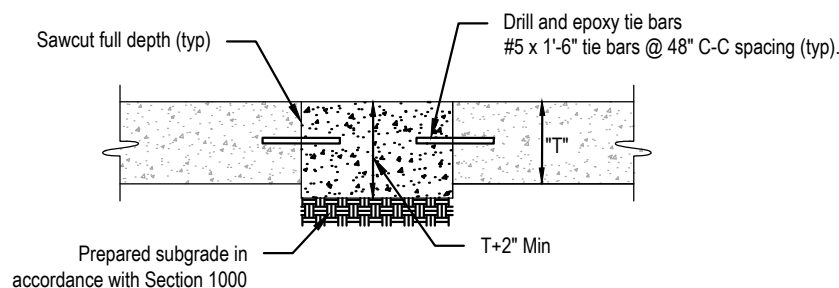


2024 STREET RECONSTRUCTION									
AREA NO.	NO. POURS	SAW CUT L.F.	CURB L.F.	WIDTH	X	LENGTH	LARGE AREA EST S.Y.	SMALL AREA EST S.Y.	NOTES
1	1	75	30	12.5	x	30.0		41.7	
3	1	26	20	3.0	x	20.0		6.7	Curb Inlet Throat
5	1	45	15	12.5	x	15.0		20.8	
6	2	50	60	25.0	x	30.0	83.3		
7	1	60	30	12.5	x	12.0		16.7	
				10.0	x	10.0		11.1	
8	1	35	15	10.0	x	10.0		11.1	
9	1	55	30	12.5	x	30.0		41.7	
10	1	26	20	3.0	x	20.0		6.7	Curb Inlet Throat
11	1	45	15	12.5	x	15.0		20.8	
14	2	50	150	25.0	x	75.0	208.3		
15	1	115	90	12.5	x	90.0	125.0		
17	2	80	60	12.5	x	30.0	41.7		
				12.5	x	30.0	41.7		
18	1	45	15	12.5	x	15.0		20.8	

2024 STREET RECONSTRUCTION					
AREA NO.	TYPE	APPROX. DIMEN.	EST S.F.	NOTES	
A	Sidewalk	4.0 x 8.0	32.0	Remove and Replace, Adjust Water Valve, Adjust Sprinkler (as needed)	
B	Curb Ramp	9.0 x 8.0	72.0	Remove	
	Curb Ramp	10.0 x 10.0	100.0	Construct, ADA Plate - Cast Iron (QTY 2)	
C	Imprinted Surface	5.0 x 8.8	43.8	Construct	
D	Sidewalk	4.3 x 30.5	129.6	Remove, Adjust Sprinkler (as needed)	
	Sidewalk	4.0 x 16.0	64.0	Construct, Adjust Manhole	

2024 STREET RECONSTRUCTION - DRIVEWAY				
AREA NO.	TYPE	APPROX. DIMEN.	EST S.F.	NOTES
34	Driveway	5 x 8	40.0	10713 Craig Street

2024 STREET RECONSTRUCTION - CURB INLET TOP		
AREA NO.	QUANTITY (EACH)	NOTES
2*	1	Curb Inlet Top
16*	2	Curb Inlet Top

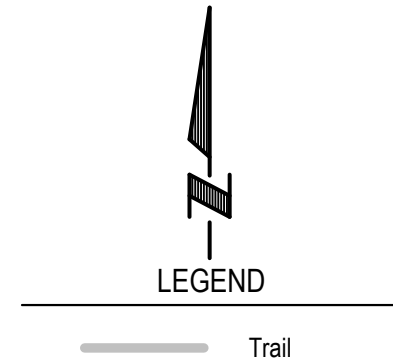
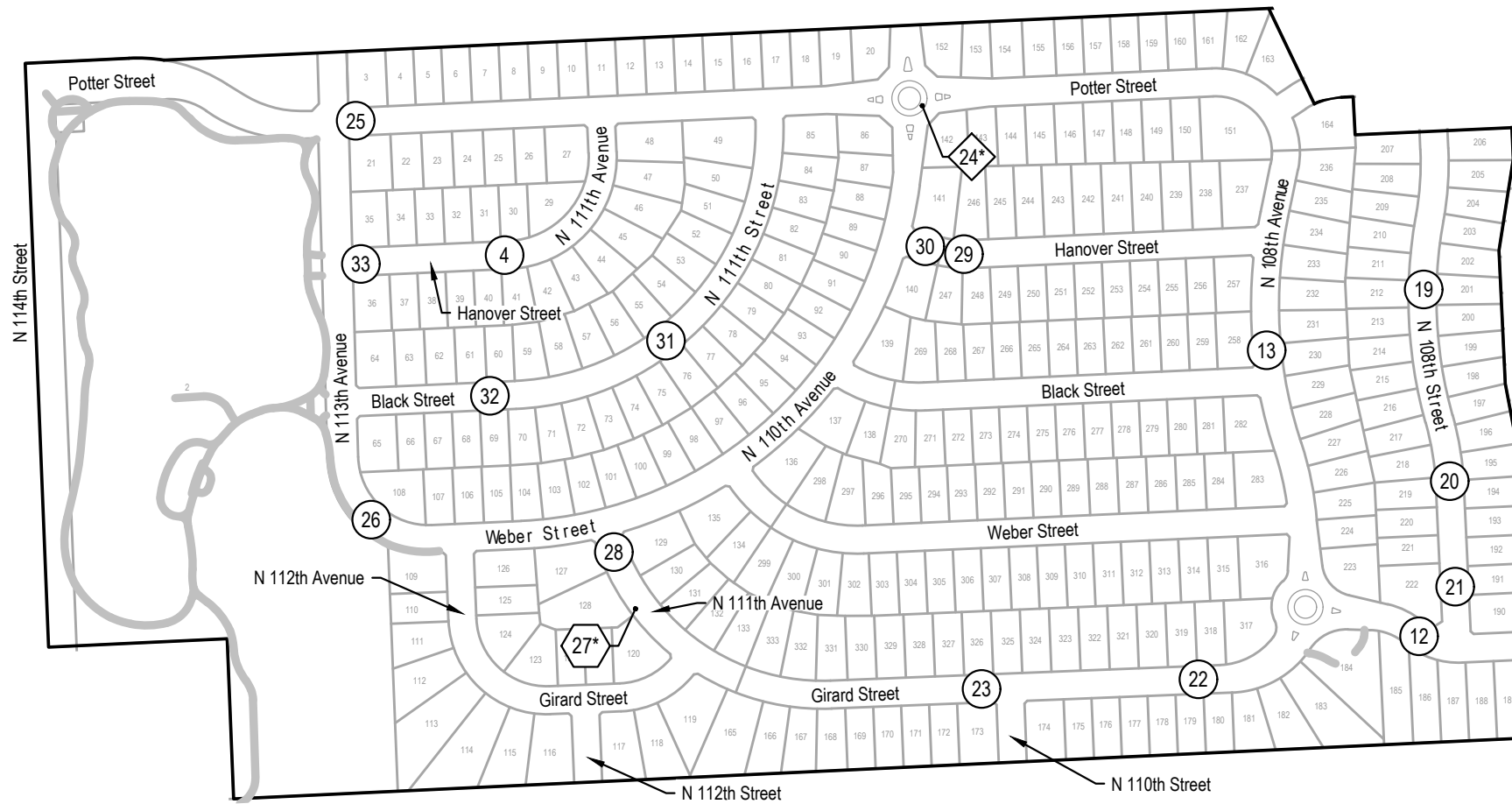


SMALL AREA CONCRETE PAVEMENT REPAIR DETAIL
 NOT TO SCALE



Revisions	Date	Description
1	6/25/2024	TAM
2	JUNE	JMB

Program: F2003.202.030
 Date: 6/25/2024
 Designed By: TAM
 Drawn By: JMB
 Scale: 1" = 30'
 Sheet: 2 of 5

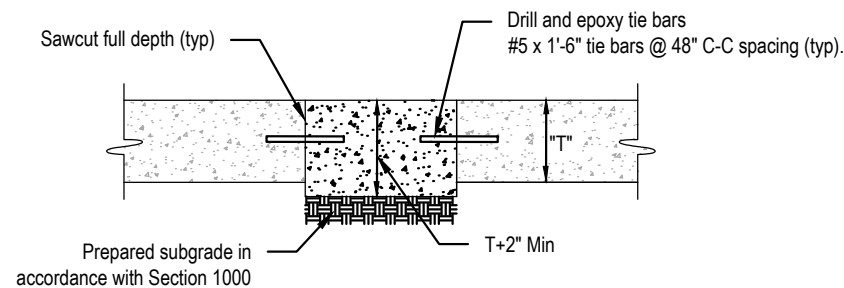


2024 STREET RECONSTRUCTION									
AREA NO.	NO. POURS	SAW CUT L.F.	CURB L.F.	WIDTH	X	LENGTH	LARGE AREA EST S.Y.	SMALL AREA EST S.Y.	NOTES
4	1	45	15	12.5	x	15.0		20.8	
	1	26	20	3.0	x	20.0		6.7	Curb Inlet Throat
12	2	65	45	12.5	x	30.0	41.7		
				12.5	x	15.0	20.8		
13	1	55	30	12.5	x	30.0		41.7	Adjust Manhole
19	1	16	10	3.0	x	10.0		3.3	Curb Inlet Throat
20	2	50	30	15.0	x	25.0		41.7	Rebar
21	1	45	15	12.5	x	15.0		20.8	
22	1	26	20	3.0	x	20.0		6.7	Curb Inlet Throat
23	1	70	45	12.5	x	45.0	62.5		Curb Inlet Throat
25	1	35	30	10.0	x	10.0		11.1	
				3.5	x	10.0		3.9	
26	1	45	15	12.5	x	15.0		20.8	
28	1	15	30	12.0	x	25.0		33.3	
29	1	45	15	12.5	x	15.0		20.8	
30	1	45	15	12.5	x	15.0		20.8	

2024 STREET RECONSTRUCTION									
AREA NO.	NO. POURS	SAW CUT L.F.	CURB L.F.	WIDTH	X	LENGTH	LARGE AREA EST S.Y.	SMALL AREA EST S.Y.	NOTES
31	1	45	15	12.5	x	15.0		20.8	
32	1	45	15	12.5	x	15.0		20.8	
33	1	30	10	10.0	x	10.0		11.1	

2024 STREET RECONSTRUCTION - CURB INLET TOP		
AREA NO.	QUANTITY (EACH)	NOTES
27*	1	Curb Inlet Top

2024 STREET RECONSTRUCTION - IMPRINTED SURFACE					
AREA NO.	TYPE	APPROX. DIMEN.		EST S.F.	NOTES
24*	Imprinted Surface	11	x	165	1815.0 Imprinted Pavement Thickness to Match Street Pavement Thickness. See City of Omaha Standard Plate 501-10 Sheet 1 of City of Omaha Standard Specifications for Public Works Construction 2020



SMALL AREA CONCRETE PAVEMENT REPAIR DETAIL
NOT TO SCALE



E & A CONSULTING GROUP, INC.
 Engineering • Planning • Environmental & Field Services
 10809 Mill Valley Road, Suite 100 • Omaha, NE 68154
 Phone: 402.865.4700 • Fax: 402.865.3599
 www.eagroup.com
 State of NE Certificate of Authorization #CA0008

E & A CONSULTING GROUP, INC.
 Engineering Answers

AVALON NORTH - DEERWOOD
 2024 STREET
 RECONSTRUCTION
 SID 490
 DOUGLAS COUNTY, NEBRASKA

WEST

Revisions:
 Date: 8/25/2024
 Description: TMM
 Drawn By: JMB
 Scale: 1" = 300'
 Sheet: 3 of 8

Proj No: P20032024030
 Date: 8/25/2024
 Design: TMM
 Drawn: JMB
 Scale: 1" = 300'
 Sheet: 3 of 8

6/25/2024 12:07 PM K:\Projects\2003\2024\Engineering\CAD Files\AvalonNorth - Deerwood 2024 Street Reconstruction-000.dwg
 Jessica Brown



2024 STREET RECONSTRUCTION									
AREA NO.	NO. POURS	SAW CUT L.F.	CURB L.F.	WIDTH	X	LENGTH	LARGE AREA EST S.Y.	SMALL AREA EST S.Y.	NOTES
1	1	75	30	12.5	x	30.0		41.7	
3	1	26	20	3.0	x	20.0		6.7	Curb Inlet Throat
4	1	45	15	12.5	x	15.0		20.8	
	1	26	20	3.0	x	20.0		6.7	Curb Inlet Throat
5	1	45	15	12.5	x	15.0		20.8	
6	2	50	60	25.0	x	30.0	83.3		
7	1	60	30	12.5	x	12.0		16.7	
				10.0	x	10.0		11.1	
8	1	35	15	10.0	x	10.0		11.1	
9	1	55	30	12.5	x	30.0		41.7	
10	1	26	20	3.0	x	20.0		6.7	Curb Inlet Throat
11	1	45	15	12.5	x	15.0		20.8	
12	2	65	45	12.5	x	30.0	41.7		
				12.5	x	15.0	20.8		
13	1	55	30	12.5	x	30.0		41.7	Adjust Manhole
14	2	50	150	25.0	x	75.0	208.3		
15	1	115	90	12.5	x	90.0	125.0		
17	2	80	60	12.5	x	30.0	41.7		
				12.5	x	30.0	41.7		
18	1	45	15	12.5	x	15.0		20.8	
19	1	16	10	3.0	x	10.0		3.3	Curb Inlet Throat
20	2	50	30	15.0	x	25.0		41.7	Rebar
21	1	45	15	12.5	x	15.0		20.8	
22	1	26	20	3.0	x	20.0		6.7	Curb Inlet Throat
23	1	70	45	12.5	x	45.0	62.5		Curb Inlet Throat
25	1	35	30	10.0	x	10.0		11.1	
				3.5	x	10.0		3.9	
26	1	45	15	12.5	x	15.0		20.8	
28	1	15	30	12.0	x	25.0		33.3	
29	1	45	15	12.5	x	15.0		20.8	
30	1	45	15	12.5	x	15.0		20.8	
31	1	45	15	12.5	x	15.0		20.8	
32	1	45	15	12.5	x	15.0		20.8	
33	1	30	10	10.0	x	10.0		11.1	

2024 STREET RECONSTRUCTION					
AREA NO.	TYPE	APPROX. DIMEN.		EST S.F.	NOTES
A	Sidewalk	4.0	x 8.0	32.0	Remove and Replace, Adjust Water Valve, Adjust Sprinkler (as needed)
B	Curb Ramp	9.0	x 8.0	72.0	Remove
	Curb Ramp	10.0	x 10.0	100.0	Construct, ADA Plate - Cast Iron (QTY 2)
C	Imprinted Surface	5.0	x 8.8	43.8	Construct
D	Sidewalk	4.3	x 30.5	129.6	Remove, Adjust Sprinkler (as needed)
	Sidewalk	4.0	x 16.0	64.0	Construct, Adjust Manhole

2024 STREET RECONSTRUCTION - IMPRINTED SURFACE					
AREA NO.	TYPE	APPROX. DIMEN.		EST S.F.	NOTES
24*	Imprinted Surface	11	x 165	1815.0	Imprinted Pavement Thickness to Match Street Pavement Thickness. See City of Omaha Standard Plate 501-10 Sheet 1 of City of Omaha Standard Specifications for Public Works Construction 2020

2024 STREET RECONSTRUCTION - DRIVEWAY					
AREA NO.	TYPE	APPROX. DIMEN.		EST S.F.	NOTES
34	Driveway	5	x 8	40.0	10713 Craig Street

2024 STREET RECONSTRUCTION - CURB INLET TOP		
AREA NO.	TYPE	NOTES
2*	1	Curb Inlet Top
16*	2	Curb Inlet Top
27*	1	Curb Inlet Top



E & A CONSULTING GROUP, INC.
Engineering • Planning • Environmental & Field Services

10809 Mill Valley Road, Suite 100 • Omaha, NE 68154
Phone: 402.685.4700 • Fax: 402.685.3599
www.eag.com
State of NE Certificate of Authorization #CA0008

E & A CONSULTING GROUP, INC.
Engineering Answers

AVALON NORTH - DEERWOOD
2024 STREET
RECONSTRUCTION
SID 490
DOUGLAS COUNTY, NEBRASKA

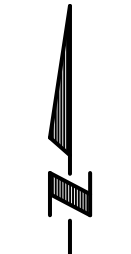
TOTAL QUANTITIES

Proj No: E2003-202-030
Date: 6/25/2024
Designed By: TAMM
Drawn By: JMB
Scale: N/A
Sheet: 4 of 5

Revisions
Date Description

6/25/2024 12:07 PM K:\Projects\2003\202\p30\Engineering\CAD Files\Paving\Avalon North - Deerwood 2024 Street Reconstruction-000.dwg

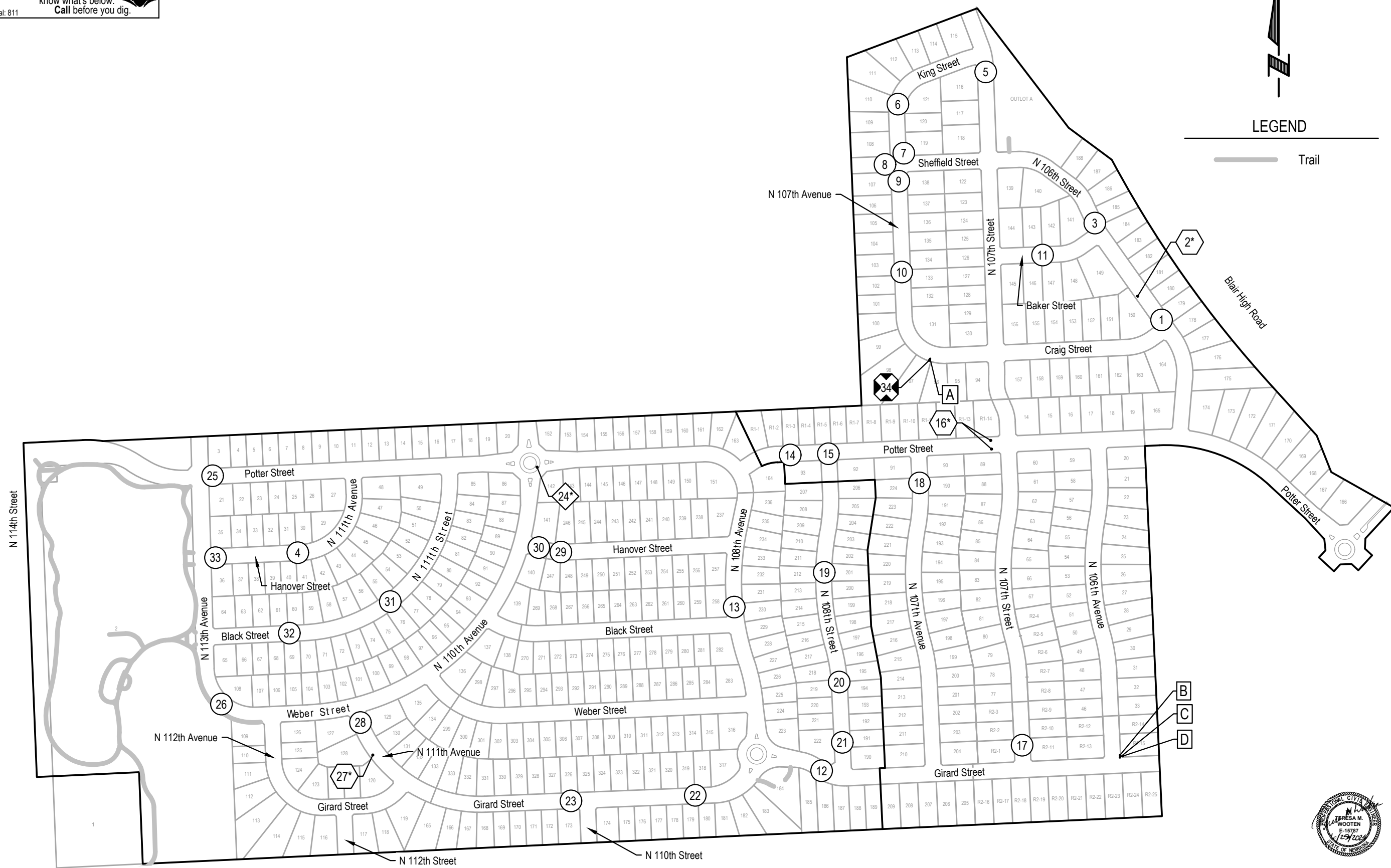
Jessica Brown



LEGEND



Trail



E & A CONSULTING GROUP, INC.
 Engineering • Planning • Environmental & Field Services
 10809 Mill Valley Road, Suite 100 • Omaha, NE 68154
 Phone: 402.265.4700 • Fax: 402.955.3599
 www.eaeg.com
 State of NE Certificate of Authorization #CA0008



E & A CONSULTING GROUP, INC.
 Engineering Answers
 AVALON NORTH - DEERWOOD
 2024 STREET
 RECONSTRUCTION
 SID 490
 DOUGLAS COUNTY, NEBRASKA

COMPOSITE MAP

Revisions	Date	Description
1	6/25/2024	TAMM
2	JUNE	JUNE
3	JUNE	JUNE
4	JUNE	JUNE
5	JUNE	JUNE

Proj No: E2003-202-030
 Date: 6/25/2024
 Designed By: TAMM
 Drawn By: JUNE
 Scale: 1" = 300'
 Sheet: 5 of 5